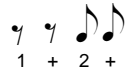
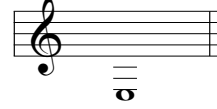


EIGHTH RESTS divide beats into two parts, each receiving one-half, just like eighth notes.



New Note E (low)



Learning Low E

122 Musical staff with treble clef, key signature of one flat, and common time. It features a sequence of eighth notes and eighth rests, with a low E note indicated above the staff.

The Mighty Oak

123 Musical staff with treble clef, key signature of one flat, and 3/4 time. It is marked 'Andante' and 'mf'. It features a sequence of eighth notes and eighth rests, with a low E note indicated above the staff.

Dare-Devil

124 Musical staff with treble clef, key signature of one flat, and common time. It is marked 'Allegretto' and 'mp'. It features a sequence of eighth notes and eighth rests, with a low E note indicated above the staff.

A Puzzle of Eighth Notes and Eighth Rests

125 Musical staff with treble clef, key signature of one sharp, and 2/4 time. It features a complex sequence of eighth notes and eighth rests with rhythmic patterns indicated by arrows and numbers below the staff.

The Dancing Donkey

126 Musical staff with treble clef, key signature of one sharp, and 2/4 time. It is marked 'Allegretto'. It features a sequence of eighth notes and eighth rests, with first and second endings indicated above the staff.